

GENERAL NOTES:

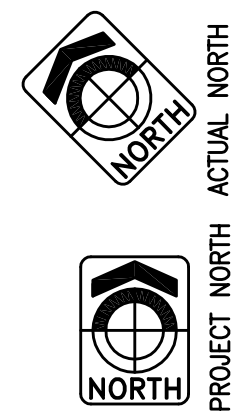
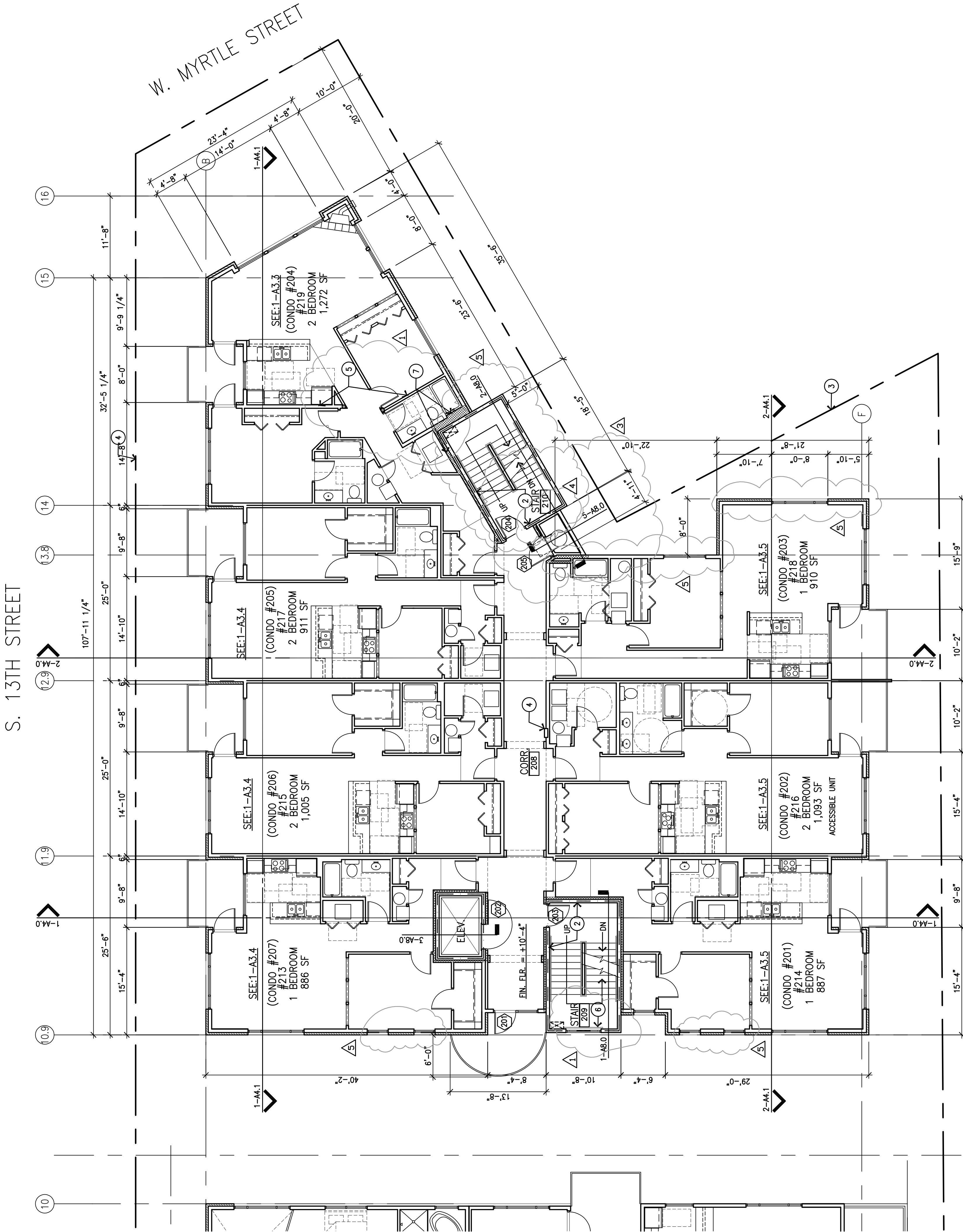
- ALL DIMENSIONS ARE TO FACE OF STUD OR MASONRY UNLESS NOTED OTHERWISE.
- ALL DOOR SWINGS, HANDLING AND ALL HANDICAP HARDWARE AS REQUIRED.
- ALL UNITS:
 - OUTLETS AT +42" AND THERMOSTATS @ +47" MAX.
 - OUTLETS AT +17" MIN.
- ALL PENETRATIONS THROUGH ROOF OR FLOOR SHALL BE MADE AT 14" MAX. (INSTALL HORIZ. GAS, ETC.) THRU FIRE-RATED CONSTRUCTION TO MEET REQUIREMENTS OF 2003 INTERNATIONAL BUILDING CODE SECTION 712. ALL SUBCONTRACTORS TO BE RESPONSIBLE FOR PROVIDING AND INSTALLING PENETRATION FIRESTOP SYSTEMS AS REQUIRED FOR THEIR WORK.
- SEE 3.0 SERIES SHEETS FOR ENLARGED FLOOR PLANS.
- PROVIDE ACCESSIBLE ELEVATOR PER ANSI 407.1.

KEY NOTES:

- POST-TENSIONED CONCRETE PARKING SLAB. SEE PARKING GARAGE SHEETS.
- 2-HOUR STAIR WALL CONSTRUCTION. SEE: 10 & 12-A10.1.
- PROPERTY LINE.
- FIRE EXTINGUISHER CABINET MOUNTED WITH HANDLE AT +48" A.F.F., SEE 10-A10.0.
- ALL BEARING WALLS TO BE 1-HOUR CONSTRUCTION. SEE: 2-A10.1.
- 2-HOUR CONCRETE WALL AT 2-HOUR STAIR SHAFT. FOR 2-HOUR STAIR SHAFT, SEE: 12-A10.1.

LEGEND:

- NEW FRAME WALL CONSTRUCTION
- BRICK VENEER
- NON-COMBUSTIBLE FRAMING
- NEW CONCRETE CONSTRUCTION
- 2-HOUR SHAFT



1 SECOND FLOOR PLAN
SCALE: 1/8" = 1'-0"

BUILDING DATA:

SECOND FLOOR:	
RESIDENTIAL UNITS:	7
(3) 1-BED	
(4) 2-BED	
TOTAL UNITS:	7
2ND FLOOR GROSS UNIT AREA=	6,972 S.F.
2ND FLOOR NET SALEABLE UNIT AREA=	6,499 S.F.
2ND FLOOR COMMON AREA =	507 S.F.
2ND FLOOR VERTICAL PENETRATIONS =	500 S.F.
2ND BUILDING TOTAL AREA =	7,980 S.F.