

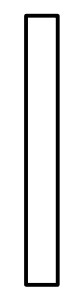




GENERAL NOTES:

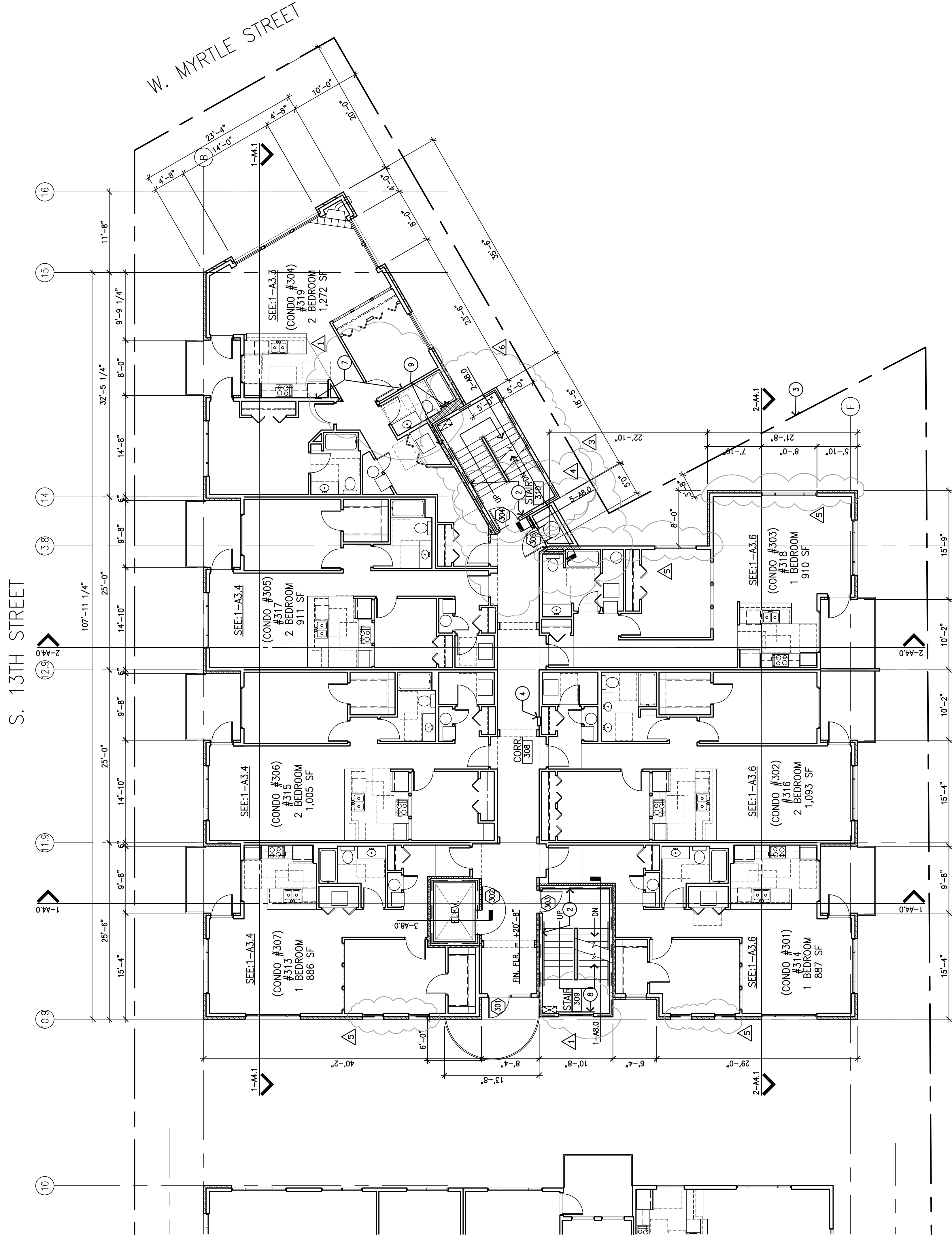
- ALL DIMENSIONS ARE TO FACE OF STUD OR MASONRY UNLESS NOTED OTHERWISE.
- PROVIDE 2X SOLID DOOR SWEPT UNDER DOOR AND HANDICAP HARDWARE AS REQUIRED.
- ALL UNITS:
 - LIGHT SWITCHES @ +42" AND THERMOSTATS @ +47" MAX.
 - OUTLETS AT +17" MIN.
- ALL PENETRATIONS THROUGH CEILING SHALL BE 1/2" DIA. (INSTALL HORIZ. GAS, ETC.) THRU FIRE-RATED CONSTRUCTION TO MEET REQUIREMENTS OF 2003 INTERNATIONAL BUILDING CODE SECTION 712. ALL SUBCONTRACTORS TO BE RESPONSIBLE FOR PROVIDING AND INSTALLING PENETRATION FIRESTOP SYSTEMS AS REQUIRED FOR THEIR WORK.
- SEE 3.0 SERIES SHEETS FOR ENLARGED FLOOR PLANS.
- PROVIDE ACCESSIBLE ELEVATOR PER ANSI 407.1.

KEY NOTES

- POST-TENSIONED CONCRETE PARKING SLAB. SEE PARKING GARAGE SHEETS.
- 2-HOUR STAIR WALL CONSTRUCTION. SEE: 10 & 12-A10.1
- PROPERTY LINE.
- FIRE EXTINGUISHER CABINET MOUNTED WITH HANDLE AT +48" A.F.F., SEE 10-A10.0.
- CAST-IN-PLACE PLANTER. PROVIDE PLANTER DRAINS THROUGH CONCRETE & TRASH ENCLOSURE. SEE SHEETS SW1.0 & SW1.1.
- ALL BEARING WALLS TO BE 1-HOUR CONSTRUCTION. SEE: 2-A10.1.
- 42" HIGH GUARDRAIL. SEE: 14-A10.2.
- FURF-OUT PLUMBING WALL AT 2-HOUR STAIR SHAFT. FOR 2-HOUR STAIR SHAFT, SEE: 12-A10.1.

LEGEND:

-  NEW FRAME WALL CONSTRUCTION
-  BRICK VENEER
-  NON-COMBUSTIBLE FRAMING
-  NEW CONCRETE CONSTRUCTION
-  2-HOUR SHAFT



BUILDING DATA:

THIRD FLOOR:	
RESIDENTIAL UNITS:	7
(4) 1-BED	
(3) 2-BED	
TOTAL UNITS:	7
3RD FLOOR GROSS UNIT AREA =	6,972 S.F.
3RD FLOOR NET UNIT AREA =	6,870 S.F.
3RD FLOOR COMMON AREA =	500 S.F.
3RD FLOOR VERTICAL PENETRATIONS =	500 S.F.
3RD BUILDING TOTAL AREA =	7,980 S.F.

1 THIRD FLOOR PLAN
SCALE: 1/8" = 1'-0"
ACTUAL NORTH